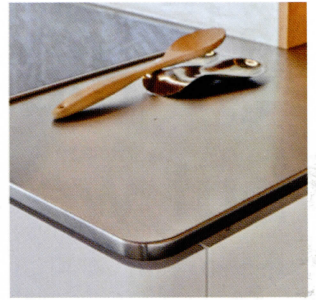


Firman Joinery win Supreme Award at Master Joiners Awards 2018

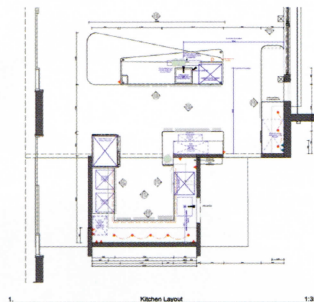


skill & attention to detail

This year's Supreme Award winner was a kitchen from Firman Joinery out of Oamaru. It not only won the Supreme Award but also Best Kitchen and Best Use of Creative Lighting.

Built as part of a new house for a lakeside property in Cromwell, Principal Gary Firman describes it as a somewhat 'special' project for them to have entered because of the technically challenging componentry and the need for exacting attention to detail to make it all work as the client envisaged.

The kitchen, designed by Melanie Craig out of Wanaka, centred around a variety of curved corners that give it a softer edge while preserving a very contemporary look as desired by both the owners and the architect. The kitchen, an island with a scullery behind, is



noted for the use of full length of American White Oak that curve around the island's radius corners and drawer fronts that wrap around the edge of the cabinetry. "Making this look all in one was both a design challenge and one for us as joiners." comments Gary.

The tradesmen that have detailed, manufactured and installed this kitchen have with their skill and attention to detail done a superb job of realising the designer's vision.

Some 500 hours went into putting this project together. The complex stainless steel and Corian benchtop was welded on site to give the surround look. "A lot of the detail came in the form of negative details on the front and side of the island which from a design point of view had to marry the look of big to small and small to big. The offset benchtop provides a real visual difference as well." says Project Manager Hamish Kane.

Other features include the slatted screen and walls behind the island and of course the detail in the pantry. The 'floating island effect' was achieved through the use of spot and strip LED lighting. The whole kitchen is enhanced by the use of the new Cedar ceiling. The overall presentation highlights the use of traditional joinery utilising the best in product and kitchen cabinetry componentry.



Firman Joinery was established in Oamaru by Gary Firman back in 1991. Hamish Kane became a part owner in 2012. Today the business has some 13 employees and has been operating from their purpose built site for the last 18 months. They do a full range of traditional joinery as well as kitchen cabinetry for both renovation and new projects.

For more information contact Gary at Firman Joinery Ltd Ph.03 434 1561 or gary@firmanjoinery.co.nz

CREDITS

Photography Jamie Cobel **Designer** Melanie Craig Design **Builder & Installer** Firman Joinery **Tops** Corian Raincloud & Rotary brushed Stainless steel **Sinks** Skullery – Reginox Ohio 500 x 400mm Island – Corian Raincloud with stainless steel base bottom Duo, Recessed front cubby Burns & Ferrall BFP 1000 **Cabinetry** Solid American White Oak finished in 20% gloss clear lacquer, 18mm MDF finished in Resene Sea Fog 50% gloss lacquer, Melamine Coastal Elm Interior with 2mm PVC edging **Hardware** Blum Legrabox Tip-On Silk White drawers, Blum Aventos Blumotion HK Servo Drive, Blum Ambialine Cutlery & utensil insert, Burns & Ferrall 502.90.503 rubbish bin, Heritage Hardware Tirane Brushed Nickel 1087 BN pull handle



"This project is a standout as it ticked all the boxes in the majority of the categories it entered. Shows a well crafted, thought through delivery with use of mature timber tones and materials with the addition of a white base palette."

Judges' comments Supreme Award

"Great workmanship and skill required to undertake a combination of materials to form the curves and overlays. Careful attention to crafting the details and each element to ensure an overall top quality result. The detail discipline continually applied throughout with subtle changes in material tone to identify the activity."

Judges' comments Best Kitchen