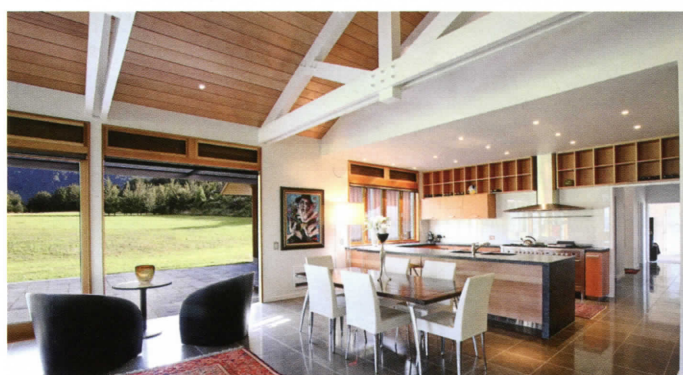




PREMIUM NEW HOMES

\$1 MILLION - \$2 MILLION



Wide open spaces

Peek at the peaks – from just about any angle

A trio of pitched-roof structures sits cheek-to-cheek in lush green surrounds, embraced from every side by the majestic mountain landscape. Built to take advantage of these spectacular views, this four-bedroom Queenstown residence sits in perfect harmony with nature and with its owners' lifestyle.

Peace and quiet prevails inside and out with every space designed to maximise comfort and easy living. The spacious open-plan layout is at its most effective in

the main kitchen-dining-living area where sleek tiles spread out underfoot. Behind the main kitchen you will find the scullery, with its stunning glass feature wall, is the perfect place to prepare the family meals in peace. Above the main living area, exposed timber trusses, painted white, make a stunning statement, jumping dramatically off the natural solid timber ceiling. Masses of glass in the form of windows and sliders let light flood in and open the interior up

to the great outdoors. An open-fire adds a cabin-like feel to the extremely spacious setting; the incredible collection of fine art throughout makes this house a home.

The equally roomy master suite, with generous windows on three walls, takes in views of the water, while access to a paved area makes for charming al fresco breakfasts or breezy afternoon naps.

Meanwhile, the well-equipped main bathroom – just one of four – offers another relaxing vista to gaze at while you soak. ●

Trevor Ward Builders Ltd
Queenstown
T 03-441 8474 M 027-430 1658
E trevorwardbuilders@xtra.co.nz W www.trevorwardbuilders.co.nz

